

£575.00 pw (£2,492.00 pcm)

Flat 11, 3 Dorset Square,, Marylebone, NW1




2 Bedrooms


2 Bathrooms


1 Reception

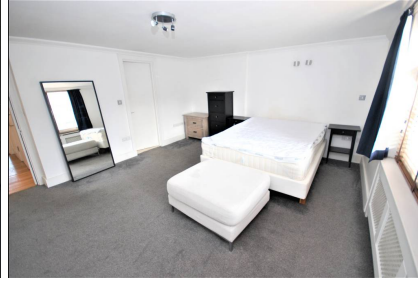
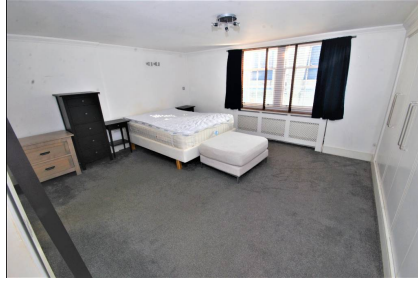

No


No

Two bedroom, two bathroom.

- Two Bedroom
- Two Bathroom

A large, bright, third-floor flat with lift in the sought after location of Dorset Square. Two double bedrooms, open-plan kitchen/reception, and family shower room. Large master bedroom with en-suite. Both bedrooms with built in storage. The apartment is generously proportioned and has some original features. Access available to Dorset Square Gardens at extra cost. A short walk to Baker Street and Marylebone stations. Video of the property available on request.



3rd Floor

