

£1,050.00 pw (£4,550.00 pcm)

Flat 110, 4b Merchant Square East,, London, W2




3 Bedrooms


2 Bathrooms


1 Reception


Yes

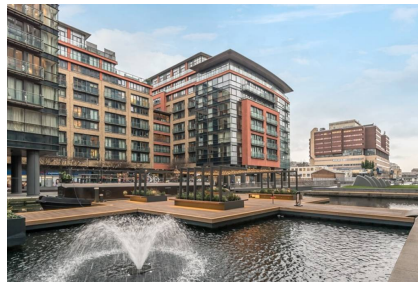
This stunning apartment comprises modern living and entertaining space with a beautiful reception room, a modern fully fitted open plan kitchen, three bedrooms,(Master bedroom with en-suite), two bathrooms and ample storage space.

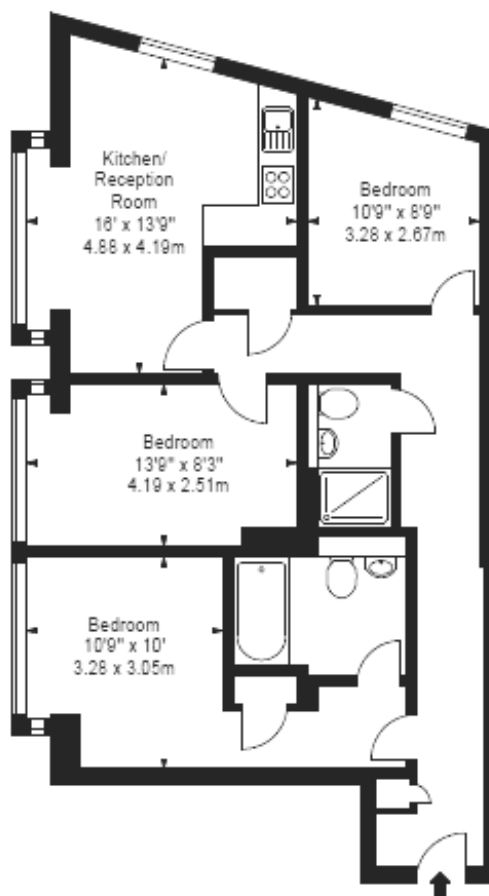
The apartment is situated on the first floor of this prestigious building which features a concierge service, lift service, and secure underground parking.

Residential Land also offer exclusive deals and discounts in local restaurants and gyms specifically to 4B Merchant square tenants. Ask the building manager for more information.

- ✓ 3 Bedrooms
- ✓ Shower Room
- ✓ En Suite Bathroom
- ✓ Reception Room
- ✓ Kitchen
- ✓ Concierge
- ✓ Lift
- ✓ Secure Underground Parking

The apartment offers easy access to superb transport links such as Paddington Train Station (Bakerloo, Hammersmith & City, Circle, District lines and Heathrow) Edgware Road (Circle, District and Bakerloo lines).





MERCHANT SQUARE EAST
LONDON W2

First Floor

Approx Gross Internal Area*

803 Sq Ft - 74.60 Sq M

