

**£945.00 pw** (£4,095.00 pcm)

Flat 25, Hamlet Gardens,, London, W6



3 Bedrooms



2 Bathrooms



1 Reception

This period apartment is based on the ground floor enclosing three good sized bedrooms and two bathrooms, set in Victorian Mansion Block.

Apartment is built with ample space and consists of three double bedrooms with fitted wardrobes and one en-suite bathroom. It is also accompanied with a large open plan dual aspect reception room, leading to a stunning fully fitted and integrated Bosch kitchen. The apartment benefits from wood flooring throughout, along with pre cabled Sky TV as well as Cat 4 cables for internet connections.

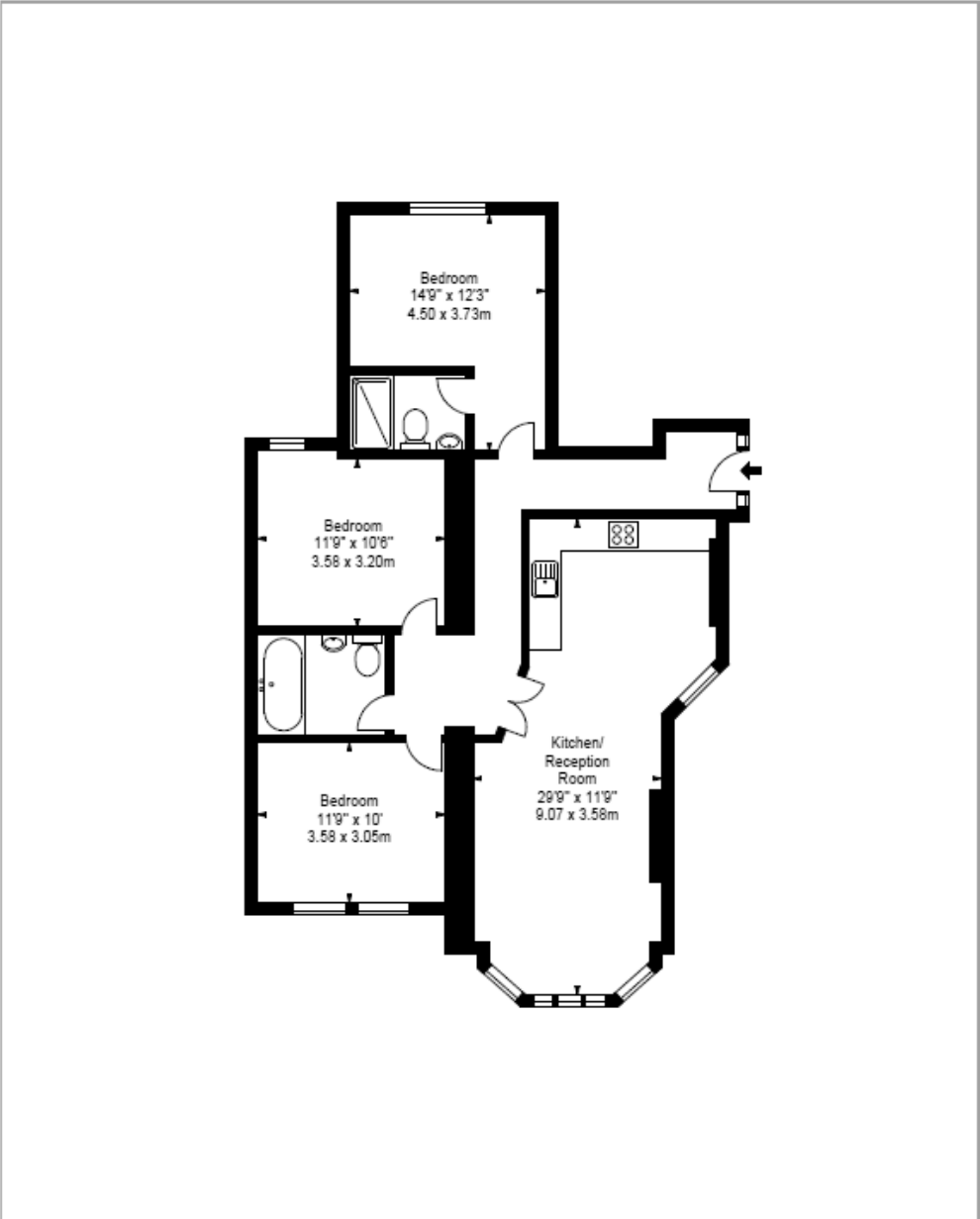
- ✓ 3 Bedrooms
- ✓ Bathroom
- ✓ En Suite Shower Room
- ✓ Reception Room
- ✓ Kitchen

The apartment location benefits from the close proximity of the 32 acer public park from which the area takes its name, including an amazing walled garden, tennis courts and a putting green.

1010 sq ft

93.83 sq m





<p><b>HAMLET GARDENS RAVENCOURT PARK LONDON W6</b></p>	<p>Approx Gross Internal Area* 1010 Sq Ft - 93.83 Sq M</p>	<p>Surveyed and Drawn by <b>BKR</b> Surreyhill House, 3-7 Surreyhill Road London, SW16 2UG Tel: 0845 257 2023 Fax: 0845 257 2024 info@birkings.co.uk www.birkings.co.uk © BKR 2015</p>
<p>Ground Floor</p>		
<p>* As Defined by RICS - Code of Measuring Practice</p>		<p>Illustration For Identification Purposes Only. Not to Scale All Calculations include Any/All Areas Under 1.8m Head Height.</p>

